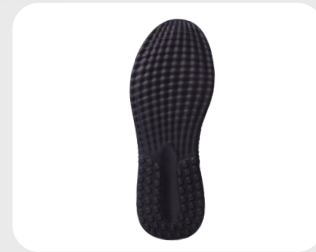




**LIGHT DUTY  
TECHNICAL FOOTWEAR**



STYLE NAME: **GLIDE SKY**

STYLE CODE: **JCB1835**

PRODUCT CLASSIFICATION: **SIP | SRC**

**SPECIFICATIONS**

|                                |  |
|--------------------------------|--|
| CERTIFICATION                  | <b>SANS 20345: 2014 &amp; CE EN ISO 20345: 2011 APPROVED</b>   |
| SAFETY FOOTWEAR CLASSIFICATION | <b>SIP : APPROVED - TOE PROTECTION</b>   |
| SLIP RESISTANCE STANDARD       | <b>SRC : TESTED FOR SLIP RESISTANCE ON CERAMIC TILE FLOOR WITH LAURYL SULPHATE AND ON STEEL FLOOR WITH GLYCERINE</b> |
| UPPER TYPE                     | <b>RIP TEK TEXTILE FABRIC</b>  |
| COLOUR                         | <b>BLACK</b>   |
| AVAILABLE SIZES                | <b>4-13</b>  |

**COMPONENTS**

|                     |   |
|---------------------|---|
| TOE PROTECTION      | <b>200J CARBON TOE CAP</b>  |
| UPPER               | <b>RIP TEK TEXTILE FABRIC FOR ABRASION RESISTANCE AND BREATHABILITY</b> |
| QUARTER LINING      | <b>BLACK FABRIC SBR</b>   |
| REMOVABLE INNERSOLE | <b>LYCRA GLIDE COMFORT INNERSOLE</b>                                    |
| INSOLE BOARD        | <b>POLYESTER NON-WOVEN INSOLE BOARD</b>                                 |
| OUTSOLE             | <b>LIGHTWEIGHT FLEX FOAM DUAL DENSITY PU/PU</b>                         |
|                     | <b>PUNCHED EYELETS</b>  |

**FEATURE**

|         |   |
|---------|---|
|         | <ul style="list-style-type: none"> <li>• METAL-FREE</li> <li>• ESD - ELECTROSTATIC DISCHARGE</li> <li>• BLUE STRIPE FOR AESTHETIC DESIGN FEATURE</li> </ul> |
| MIDSOLE | <b>KEVLAR MIDSOLE FOR ANTI PENETRATION</b>  |