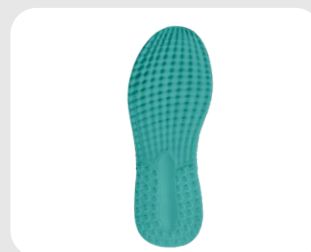




**LIGHT DUTY
TECHNICAL FOOTWEAR**



STYLE NAME: **GLIDE AQUA**

STYLE CODE: **JCB1845**

PRODUCT CLASSIFICATION: **SIP | SRC**

SPECIFICATIONS

CERTIFICATION	SANS 20345: 2014 & CE EN ISO 20345: 2011 APPROVED
SAFETY FOOTWEAR CLASSIFICATION	SIP : APPROVED - TOE PROTECTION
SLIP RESISTANCE STANDARD	SRC : TESTED FOR SLIP RESISTANCE ON CERAMIC TILE FLOOR WITH LAURYL SULPHATE AND ON STEEL FLOOR WITH GLYCERINE
UPPER TYPE	RIP TEK TEXTILE FABRIC
COLOUR	AQUA
AVAILABLE SIZES	3-12

COMPONENTS

TOE PROTECTION	200J CARBON TOE CAP
UPPER	RIP TEK TEXTILE FABRIC FOR ABRASION RESISTANCE AND BREATHABILITY
QUARTER LINING	AQUA FABRIC SBR
REMOVABLE INNERSOLE	LYCRA GLIDE COMFORT INNERSOLE
INSOLE BOARD	POLYESTER NON-WOVEN INSOLE BOARD
OUTSOLE	LIGHTWEIGHT FLEX FOAM DUAL DENSITY PU/PU
	PUNCHED EYELETS

FEATURE

	<ul style="list-style-type: none"> • METAL-FREE • ESD - ELECTROSTATIC DISCHARGE • FEMININE STYLING
MIDSOLE	KEVLAR MIDSOLE FOR ANTI PENETRATION